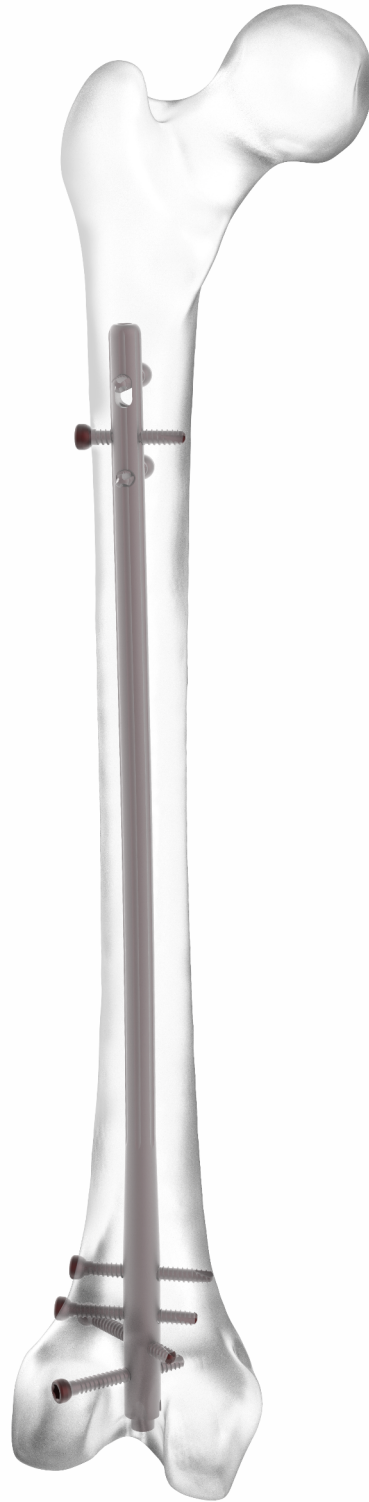


RETROGRADE FEMUR NAILING SYSTEM

RETROGRADE FEMUR NAILING SYSTEM



about us

Auxein Medical is an integrated, research based, orthopaedic Implants & instruments manufacturing company, producing a wide range of quality, affordable generic implants, trusted by healthcare professionals and patients across geographies. It is the Company's constant endeavor to provide a wide basket of generic and our innovator products that exceed the highest expectations of customers in term of quality and safety. The company has world-class manufacturing unit established in india and serves customers in over 75 countries worldwide.

Our Achievements



Orthopaedic Implants

Retrograde Femur Nail



Ø Dia	Length	Stainless Steel	Titanium
9.5mm	180mm	1458-9.5-180	TI-1458-9.5-180
9.5mm	200mm	1458-9.5-200	TI-1458-9.5-200
9.5mm	300mm	1458-9.5-300	TI-1458-9.5-300
9.5mm	320mm	1458-9.5-320	TI-1458-9.5-320
9.5mm	340mm	1458-9.5-340	TI-1458-9.5-340
9.5mm	360mm	1458-9.5-360	TI-1458-9.5-360
9.5mm	380mm	1458-9.5-380	TI-1458-9.5-380
9.5mm	400mm	1458-9.5-400	TI-1458-9.5-400
10mm	180mm	1458-10-180	TI-1458-10-180
10mm	200mm	1458-10-200	TI-1458-10-200
10mm	300mm	1458-10-300	TI-1458-10-300
10mm	320mm	1458-10-320	TI-1458-10-320
10mm	340mm	1458-10-340	TI-1458-10-340
10mm	360mm	1458-10-360	TI-1458-10-360
10mm	380mm	1458-10-380	TI-1458-10-380
10mm	400mm	1458-10-400	TI-1458-10-400
11mm	180mm	1458-11-180	TI-1458-11-180
11mm	200mm	1458-11-200	TI-1458-11-200
11mm	300mm	1458-11-300	TI-1458-11-300
11mm	320mm	1458-11-320	TI-1458-11-320
11mm	340mm	1458-11-340	TI-1458-11-340
11mm	360mm	1458-11-360	TI-1458-11-360
11mm	380mm	1458-11-380	TI-1458-11-380
11mm	400mm	1458-11-400	TI-1458-11-400
11mm	180mm	1458-12-180	TI-1458-12-180
11mm	200mm	1458-12-200	TI-1458-12-200
11mm	300mm	1458-12-300	TI-1458-12-300
11mm	320mm	1458-12-320	TI-1458-12-320
11mm	340mm	1458-12-340	TI-1458-12-340
11mm	360mm	1458-12-360	TI-1458-12-360
11mm	380mm	1458-12-380	TI-1458-12-380
11mm	400mm	1458-12-400	TI-1458-12-400



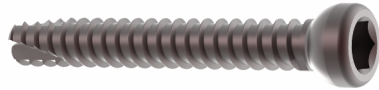
Retrograde Femur Nail

STERILE

Ø Dia	Length	Stainless Steel	Titanium
9.5mm	180mm	1458-9.5-180-S	TI-1458-9.5-180-S
9.5mm	200mm	1458-9.5-200-S	TI-1458-9.5-200-S
9.5mm	300mm	1458-9.5-300-S	TI-1458-9.5-300-S
9.5mm	320mm	1458-9.5-320-S	TI-1458-9.5-320-S
9.5mm	340mm	1458-9.5-340-S	TI-1458-9.5-340-S
9.5mm	360mm	1458-9.5-360-S	TI-1458-9.5-360-S
9.5mm	380mm	1458-9.5-380-S	TI-1458-9.5-380-S
9.5mm	400mm	1458-9.5-400-S	TI-1458-9.5-400-S
10mm	180mm	1458-10-180-S	TI-1458-10-180-S
10mm	200mm	1458-10-200-S	TI-1458-10-200-S
10mm	300mm	1458-10-300-S	TI-1458-10-300-S
10mm	320mm	1458-10-320-S	TI-1458-10-320-S
10mm	340mm	1458-10-340-S	TI-1458-10-340-S
10mm	360mm	1458-10-360-S	TI-1458-10-360-S
10mm	380mm	1458-10-380-S	TI-1458-10-380-S
10mm	400mm	1458-10-400-S	TI-1458-10-400-S
11mm	180mm	1458-11-180-S	TI-1458-11-180-S
11mm	200mm	1458-11-200-S	TI-1458-11-200-S
11mm	300mm	1458-11-300-S	TI-1458-11-300-S
11mm	320mm	1458-11-320-S	TI-1458-11-320-S
11mm	340mm	1458-11-340-S	TI-1458-11-340-S
11mm	360mm	1458-11-360-S	TI-1458-11-360-S
11mm	380mm	1458-11-380-S	TI-1458-11-380-S
11mm	400mm	1458-11-400-S	TI-1458-11-400-S
11mm	180mm	1458-12-180-S	TI-1458-12-180-S
11mm	200mm	1458-12-200-S	TI-1458-12-200-S
11mm	300mm	1458-12-300-S	TI-1458-12-300-S
11mm	320mm	1458-12-320-S	TI-1458-12-320-S
11mm	340mm	1458-12-340-S	TI-1458-12-340-S
11mm	360mm	1458-12-360-S	TI-1458-12-360-S
11mm	380mm	1458-12-380-S	TI-1458-12-380-S
11mm	400mm	1458-12-400-S	TI-1458-12-400-S



5.0mm Locking Screw For Retrograde Femur Nail



STERILE

Length	Stainless Steel	Titanium
32mm	1458-032	TI-1458-032
34mm	1458-034	TI-1458-034
36mm	1458-036	TI-1458-036
38mm	1458-038	TI-1458-038
40mm	1458-040	TI-1458-040
42mm	1458-042	TI-1458-042
44mm	1458-044	TI-1458-044
46mm	1458-046	TI-1458-046
48mm	1458-048	TI-1458-048
50mm	1458-050	TI-1458-050
52mm	1458-052	TI-1458-052
54mm	1458-054	TI-1458-054
56mm	1458-056	TI-1458-056
58mm	1458-058	TI-1458-058
60mm	1458-060	TI-1458-060
62mm	1458-062	TI-1458-062
64mm	1458-064	TI-1458-064
66mm	1458-066	TI-1458-066
68mm	1458-068	TI-1458-068
70mm	1458-070	TI-1458-070
72mm	1458-072	TI-1458-072
74mm	1458-074	TI-1458-074
76mm	1458-076	TI-1458-076
78mm	1458-078	TI-1458-078
80mm	1458-080	TI-1458-080

Length	Stainless Steel	Titanium
32mm	1458-032-S	TI-1458-032-S
34mm	1458-034-S	TI-1458-034-S
36mm	1458-036-S	TI-1458-036-S
38mm	1458-038-S	TI-1458-038-S
40mm	1458-040-S	TI-1458-040-S
42mm	1458-042-S	TI-1458-042-S
44mm	1458-044-S	TI-1458-044-S
46mm	1458-046-S	TI-1458-046-S
48mm	1458-048-S	TI-1458-048-S
50mm	1458-050-S	TI-1458-050-S
52mm	1458-052-S	TI-1458-052-S
54mm	1458-054-S	TI-1458-054-S
56mm	1458-056-S	TI-1458-056-S
58mm	1458-058-S	TI-1458-058-S
60mm	1458-060-S	TI-1458-060-S
62mm	1458-062-S	TI-1458-062-S
64mm	1458-064-S	TI-1458-064-S
66mm	1458-066-S	TI-1458-066-S
68mm	1458-068-S	TI-1458-068-S
70mm	1458-070-S	TI-1458-070-S
72mm	1458-072-S	TI-1458-072-S
74mm	1458-074-S	TI-1458-074-S
76mm	1458-076-S	TI-1458-076-S
78mm	1458-078-S	TI-1458-078-S
80mm	1458-080-S	TI-1458-080-S

End Cap For Retrograde Femur Nail

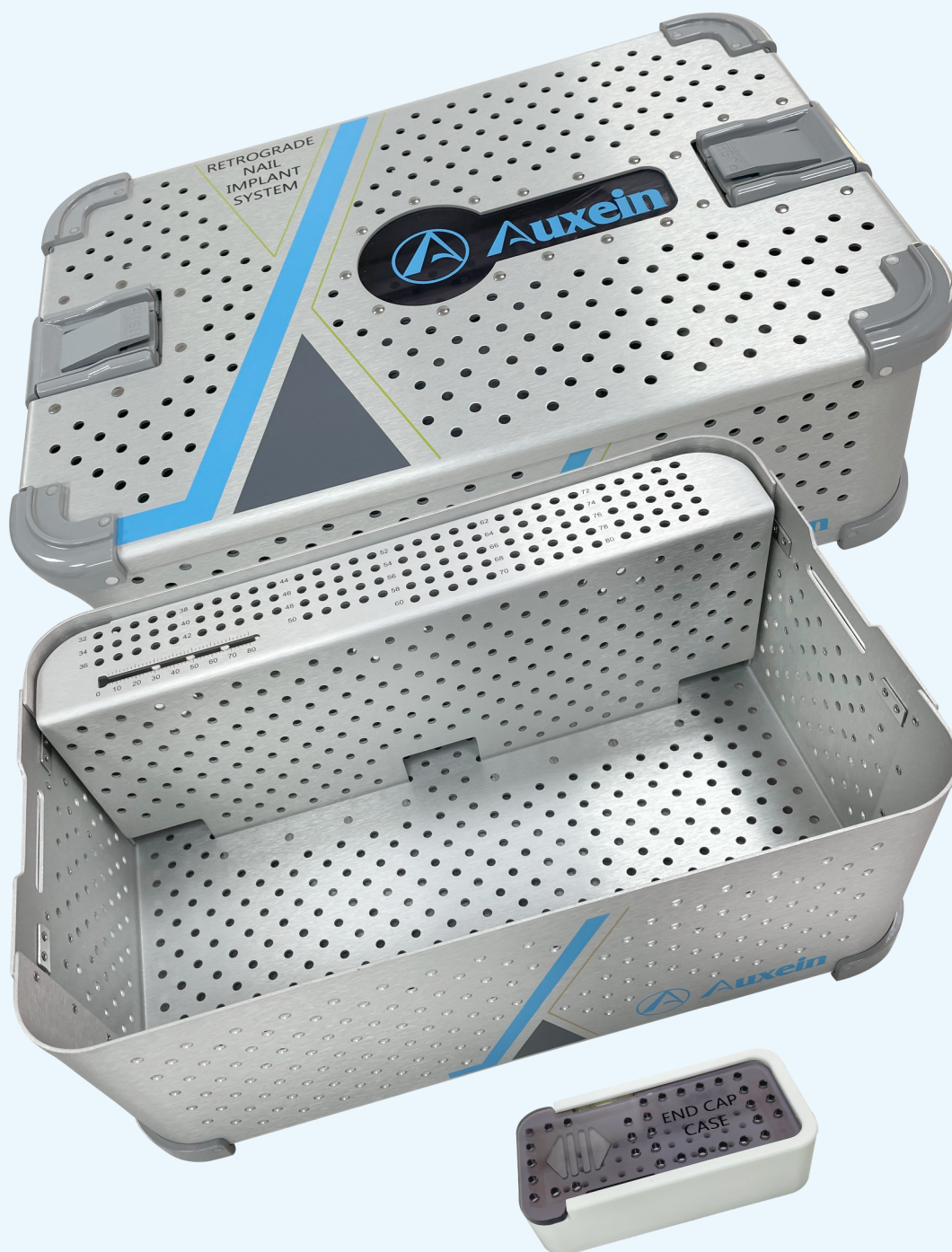

Stainless Steel	Titanium
1458-01	TI-1458-01

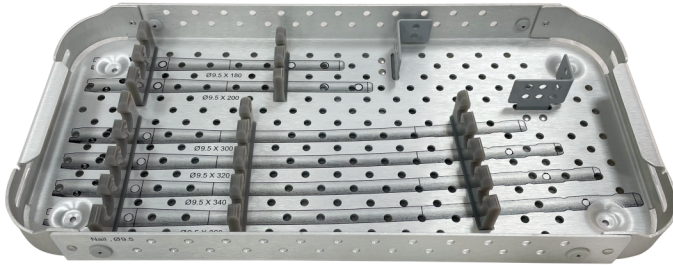
STERILE

Stainless Steel	Titanium
1458-01-S	TI-1458-01-S



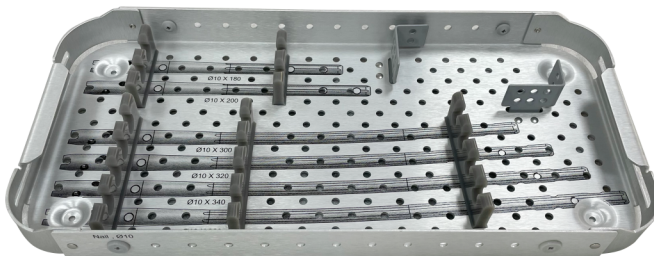
1-019 Implant Box for Retrograde Femoral Nail



Tray 1


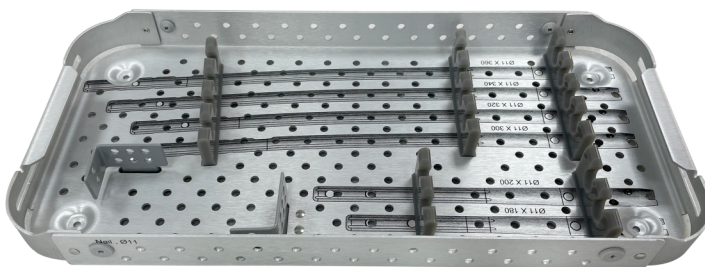
Dia	Length	Qty
Ø9.5mm	180mm to 360mm	1pcs

Stainless Steel or Titanium Implants can be placed as per requirement

Tray 2


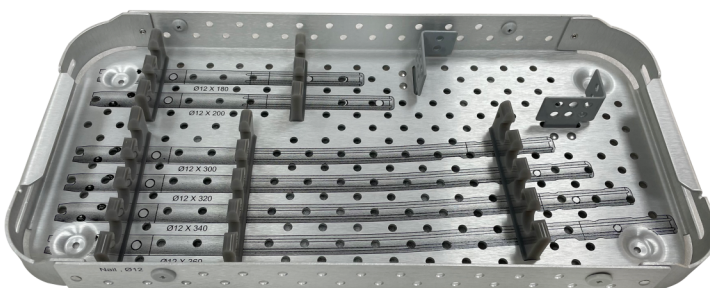
Dia	Length	Qty
Ø10mm	180mm to 360mm	1pcs

Stainless Steel or Titanium Implants can be placed as per requirement

Tray 3


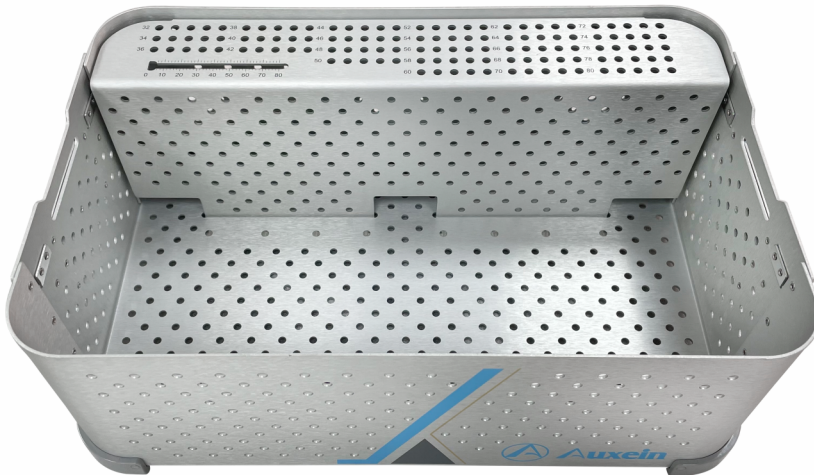
Dia	Length	Qty
Ø11mm	180mm to 360mm	1pcs

Stainless Steel or Titanium Implants can be placed as per requirement

Tray 4


Dia	Length	Qty
Ø12mm	180mm to 360mm	1pcs

Stainless Steel or Titanium Implants can be placed as per requirement



Ø5.0mm Locking Screw For Retrograde Femur Nail

Dia	Length	Qty
Ø5.0mm	32mm to 80mm	5pcs

Stainless Steel or Titanium Implants can be placed as per requirement



End Cap For Retrograde Femur Nail

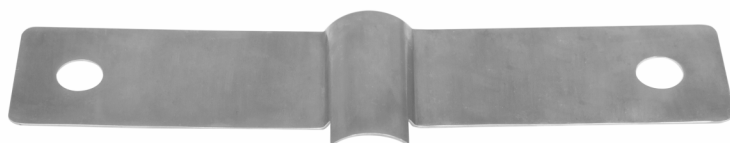
Qty
2pcs

Stainless Steel or Titanium Implants can be placed as per requirement

1458-IN-1 Guide Wire with Threaded Tip \varnothing 3.2mm x Thread Length 15mm x Length 400mm



1458-IN-2 Tissue Protector for Retrograde Nail



1458-IN-3 Depth Gauge measuring upto 120mm for Retrograde Nail



1458-IN-4 Protection Sleeve 17/14mm For Entry Reamer/Wire Guide for Retrograde Nail



1458-IN-5 Entry Wire Guide \varnothing 14mm for 3.2mm Guide Wire - Retrograde Nail



1458-IN-6 Entry Reamer \varnothing 13.5mm for Retrograde Nail



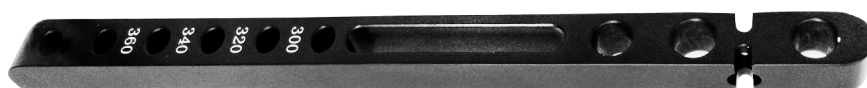
1458-IN-7 Cannulated Awl Ø13.5mm for Retrograde Nail



1458-IN-8 Insertion Handle for Retrograde Nail



1458-IN-9 Distal Aiming Device for Long Retrograde Nail



1458-IN-10 Proximal/Distal Aiming Attachment for Retrograde Nail



1458-IN-11 Proximal Aiming Arm for Retrograde Nail



1458-IN-12 Distal Arm Attachment for Distal Aiming Device - Retrograde Nail



1458-IN-13 Proximal/ Distal Short Nail Aiming Device for Retrograde Nail



1458-IN-14 Distal Aiming Device Bolt for Retrograde Nail



1458-IN-15 Stabilizing Rod Guide Ø10/8.0mm for Retrograde Nail



1458-IN-16 Stabilizing Rod With Quick Coupling End for Retrograde Nail



1458-IN-17 Stabilizing Spacer for Retrograde Nail



1458-IN-18 Distal Arm for Retrograde Nail



1458-IN-19 Locking Bolt For Distal Arm for Retrograde Nail



1458-IN-20 Threaded Lateral Stabilizing Rods Guide for Retrograde Femur Nail



1458-IN-21 Threaded Lateral Stabilizing Rod with Quick Coupling End Ø9.5mm, for Retrograde Nail



1458-IN-22 Threaded Lateral Stabilizing Rod with Quick Coupling End Ø10mm, for Retrograde Nail



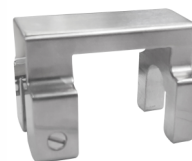
1458-IN-23 Threaded Lateral Stabilizing Rod with Quick Coupling End Ø11mm, for Retrograde Nail



1458-IN-24 Threaded Lateral Stabilizing Rod with Quick Coupling End Ø12mm, for Retrograde Nail



1458-IN-25 Stabilizing Spacer for Threaded Rod, for Retrograde Nail



1458-IN-26 Nail Holding Bolt for Retrograde Nail



1458-IN-27 Allen key, Hex 5.0mm for Retrograde Nail



1458-IN-28 Impactor For Guide Handle for Retrograde Nail



1458-IN-29 Drill For Stabilizing Rod with Quick Coupling End for Retrograde Nail



1458-IN-30 Hammer Guide for Retrograde Nail



1458-IN-31 Extraction Screw for Retrograde Nail



1458-IN-32 Trocar Nail Ø3.2mm for Retrograde Nail



1458-IN-33 Position Rod Ø3.8mm x Length 260mm, for Retrograde Nail



Reamer Head

Code	Dia
1458-IN-34	Ø9mm
1458-IN-35	Ø9.5mm
1458-IN-36	Ø10mm
1458-IN-37	Ø10.5mm
1458-IN-38	Ø11mm
1458-IN-39	Ø11.5mm
1458-IN-40	Ø12mm
1458-IN-41	Ø12.5mm
1458-IN-42	Ø13mm



1458-IN-43 Handle with Quick Coupling for Retrograde Nail



1458-IN-44 Reducer for Retrograde Nail



1458-IN-45 Guide Wire with Olive $\varnothing 2.5\text{mm}$ x Length 1000mm x Olive $\varnothing 3.8\text{mm}$



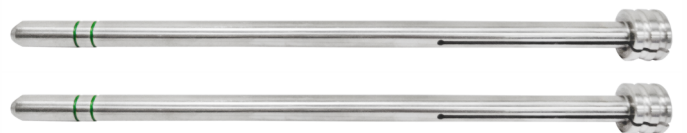
1458-IN-46 Flexible Reamer Shaft with Jacob Coupling, for Retrograde Nail



1458-IN-47 Outer Sleeve 11/8mm for Retrograde Nail



1458-IN-48 Cannulated Sleeve for Drill Bit 8/4mm for Retrograde Nail



1458-IN-49 Long Trocar $\varnothing 4.0\text{mm}$ x Length 205mm for Retrograde Nail



1458-IN-50 Drill Bit Plain Shank/Jacob Chuck End Ø4.0mm x Length 320mm, for Retrograde Nail



1458-IN-51 Stopper for Drill Bit Ø4.0mm, for Retrograde Nail



1458-IN-52 Locating Pin Ø4.0mm x Length 450mm, for Retrograde Nail



1458-IN-53 Reamer For Lateral Cortex with Quick Coupling End for Retrograde Nail



1458-IN-54 Hexagonal Wrench, Hex 4.5mm, for Retrograde Nail



1458-IN-60 Threaded Trocar For Hexagonal Wrench Ø2.2mm x Thread 4mm x Length 267mm, for Retrograde Nail



1458-IN-55 Combined Hammer for Retrograde Nail



1458-IN-56 Combined Wrench 11mm for Retrograde Nail



1458-IN-57 L Handle Pin Wrench Ø4.5mm for Impactor - Retrograde Nail



1458-IN-62 Radiographic Ruler for Retrograde Nail



1458-IN-63 Wire Holder for Retrograde Nail

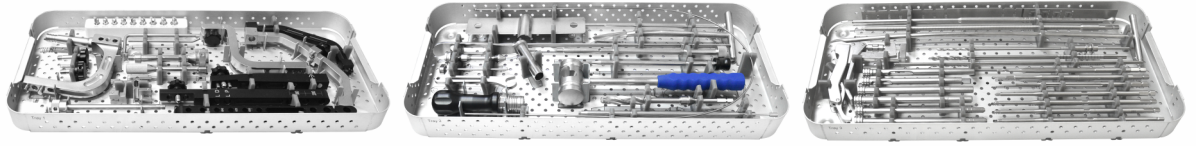


1458-IN-64 Guide Wire Without Olive Ø2.5mm x Length 1000mm



1458-IN-61

Instrument Trays for Retrograde Nailing Instrument Set

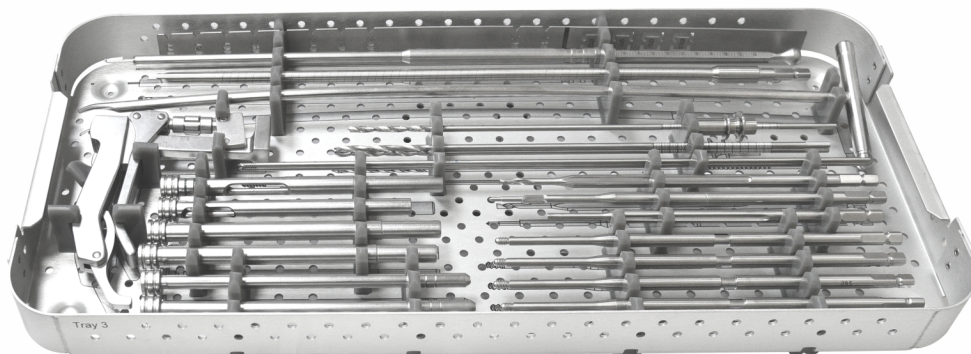
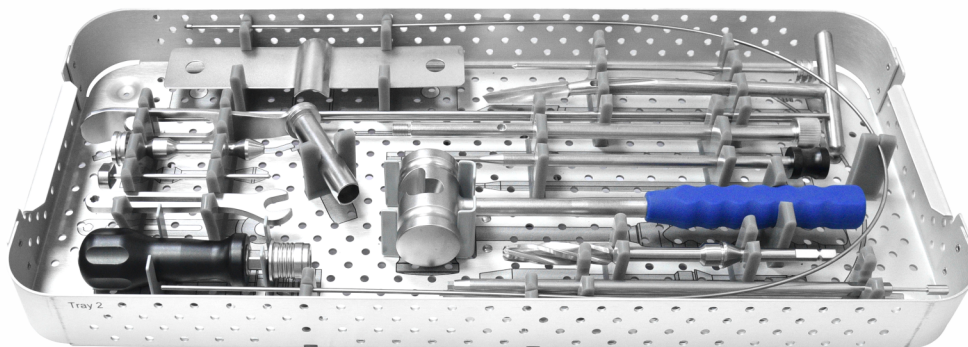
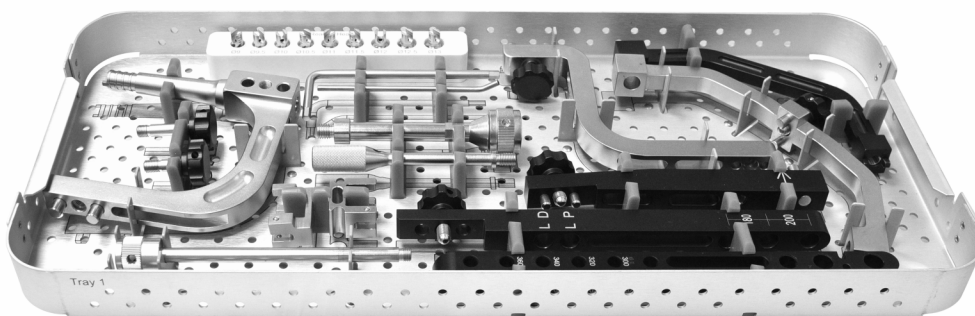


1458-IN-59

Container For Retrograde Nailing Instrument Set



INS-1458 Retrograde Nail Instrument Set



INS-1458 Retrograde Nail Instrument Set

Code	Set Consisting of	Units
1458-IN-1	Guide Wire with Threaded Tip Ø3.2mm x Thread Length 15mm x Length 400mm	2
1458-IN-2	Tissue Protector for Retrograde Nail	1
1458-IN-3	Depth Gauge measuring upto 120mm for Retrograde Nail	1
1458-IN-4	Protection Sleeve 17/14mm For Entry Reamer/Wire Guide for Retrograde Nail	1
1458-IN-5	Entry Wire Guide Ø14mm for 3.2mm Guide Wire - Retrograde Nail	1
1458-IN-6	Entry Reamer Ø13.5mm for Retrograde Nail	1
1458-IN-7	Cannulated Awl Ø13.5mm for Retrograde Nail	1
1458-IN-8	Insertion Handle for Retrograde Nail	1
1458-IN-9	Distal Aiming Device for Long Retrograde Nail	1
1458-IN-10	Proximal/Distal Aiming Attachment for Retrograde Nail	1
1458-IN-11	Proximal Aiming Arm for Retrograde Nail	1
1458-IN-12	Distal Arm Attachment for Distal Aiming Device - Retrograde Nail	1
1458-IN-13	Proximal/ Distal Short Nail Aiming Device for Retrograde Nail	1
1458-IN-14	Distal Aiming Device Bolt for Retrograde Nail	1
1458-IN-15	Stabilizing Rod Guide Ø10/8.0mm for Retrograde Nail	1
1458-IN-16	Stabilizing Rod With Quick Coupling End for Retrograde Nail	1
1458-IN-17	Stabilizing Spacer for Retrograde Nail	1
1458-IN-18	Distal Arm for Retrograde Nail	1
1458-IN-19	Locking Bolt For Distal Arm for Retrograde Nail	1
1458-IN-20	Threaded Lateral Stabilizing Rods Guide for Retrograde Femur Nail	1
1458-IN-21	Threaded Lateral Stabilizing Rod with Quick Coupling End Ø9.5mm, for Retrograde Nail	1
1458-IN-22	Threaded Lateral Stabilizing Rod with Quick Coupling End Ø10mm, for Retrograde Nail	1
1458-IN-23	Threaded Lateral Stabilizing Rod with Quick Coupling End Ø11mm, for Retrograde Nail	1
1458-IN-24	Threaded Lateral Stabilizing Rod with Quick Coupling End Ø12mm, for Retrograde Nail	1
1458-IN-25	Stabilizing Spacer for Threaded Rod, for Retrograde Nail	1
1458-IN-26	Nail Holding Bolt for Retrograde Nail	1
1458-IN-27	Allen key, Hex 5.0mm for Retrograde Nail	1
1458-IN-28	Impactor For Guide Handle for Retrograde Nail	1
1458-IN-29	Drill For Stabilizing Rod with Quick Coupling End for Retrograde Nail	1
1458-IN-30	Hammer Guide for Retrograde Nail	1
1458-IN-31	Extraction Screw for Retrograde Nail	1
1458-IN-32	Trocar Nail Ø3.2mm for Retrograde Nail	1
1458-IN-33	Position Rod Ø3.8mm x Length 260mm, for Retrograde Nail	1
1458-IN-34	Reamer Head Ø9.0mm for Retrograde Nail	1
1458-IN-35	Reamer Head Ø9.5mm for Retrograde Nail	1
1458-IN-36	Reamer Head Ø10.0mm for Retrograde Nail	1

Code	Set Consisting of	Units
1458-IN-37	Reamer Head Ø10.5mm for Retrograde Nail	1
1458-IN-38	Reamer Head Ø11.0mm for Retrograde Nail	1
1458-IN-39	Reamer Head Ø11.5mm for Retrograde Nail	1
1458-IN-40	Reamer Head Ø12.0mm for Retrograde Nail	1
1458-IN-41	Reamer Head Ø12.5mm for Retrograde Nail	1
1458-IN-42	Reamer Head Ø13.0mm for Retrograde Nail	1
1458-IN-43	Handle with Quick Coupling for Retrograde Nail	1
1458-IN-44	Reducer for Retrograde Nail	1
1458-IN-45	Guide Wire with Olive Ø2.5mm x Length 1000mm x Olive Ø3.8mm	1
1458-IN-46	Flexible Reamer Shaft with Jacob Coupling, for Retrograde Nail	1
1458-IN-47	Outer Sleeve 11/8mm for Retrograde Nail	2
1458-IN-48	Cannulated Sleeve for Drill Bit 8/4mm for Retrograde Nail	2
1458-IN-49	Long Trocar Ø4.0mm x Length 205mm for Retrograde Nail	1
1458-IN-50	Drill Bit Plain Shank/Jacob Chuck End Ø4.0mm x Length 320mm, for Retrograde Nail	3
1458-IN-51	Stopper for Drill Bit Ø4.0mm, for Retrograde Nail	1
1458-IN-52	Locating Pin Ø4.0mm x Length 320mm, for Retrograde Nail	2
1458-IN-53	Reamer For Lateral Cortex with Quick Coupling End for Retrograde Nail	1
1458-IN-54	Hexagonal Wrench, Hex 4.5mm, for Retrograde Nail	2
1458-IN-60	Threaded Trocar For Hexagonal Wrench Ø2.2mm x Thread 4mm x Length 267mm, for Retrograde Nail	2
1458-IN-55	Combined Hammer for Retrograde Nail	1
1458-IN-56	Combined Wrench 11mm for Retrograde Nail	1
1458-IN-57	L Handle Pin Wrench Ø4.5mm for Impactor - Retrograde Nail	1
1458-IN-62	Radiographic Ruler for Retrograde Nail	1
1458-IN-63	Wire Holder for Retrograde Nail	1
1458-IN-64	Guide Wire Without Olive Ø2.5mm x Length 1000mm	1
1458-IN-61	Instrument Trays for Retrograde Nailing Instrument Set	3
1458-IN-59	Container For Retrograde Nailing Instrument Set	1



USA

Auxein Inc.
1500 Nw 89th Court, Suite 107-108
Doral, Florida 33172
Tel: +1 305 395 6062
E Fax: +1 305 395 6262
Email: USoffice@auxein.com

MEXICO

Auxein México, S.A. de C.V.
Tepic 139 int 801, Colonia Roma Sur,
Alcaldía Cuauhtémoc, CDMX,
México, C.P. 06760
Tel: +521 55 7261 0318
Email: info@auxein.mx

INDIA

Auxein Medical Pvt. Ltd.
Plot No. 168-169-170, Phase-4,
Kundli Industrial Area,
HSIIDC, Sector-57, Sonapat - 131028, Haryana
Tel: +91 99106 43638 | Fax: +91 86077 70197
Email: info@auxein.com