

AV-WISELOCK

AV-WISELOCK™

2.4mm Endosteal Plate



about us

Auxein Medical is an integrated, research based, orthopaedic Implants & instruments manufacturing company, producing a wide range of quality, affordable generic implants, trusted by healthcare professionals and patients across geographies. It is the Company's constant endeavor to provide a wide basket of generic and our innovator products that exceed the highest expectations of customers in term of quality and safety. The company has world-class manufacturing unit established in india and serves customers in over 75+ countries worldwide.

Our Achievements



AV-WISELOCK™

2.4mm AV-Wiselock Endosteal Plate

INTRODUCTION

Endosteal plates are used for the first metatarsal bone correction. The implants are a part of the 2.4mm AV-Wiselock plates system developed by Auxein. The presented range of implants is made of Titanium Alloys.

Compliance with the requirements of quality management systems and the requirements of Directive and the regulatory.



2 holes for 2.4mm AV-Wiselock screws locked angularly



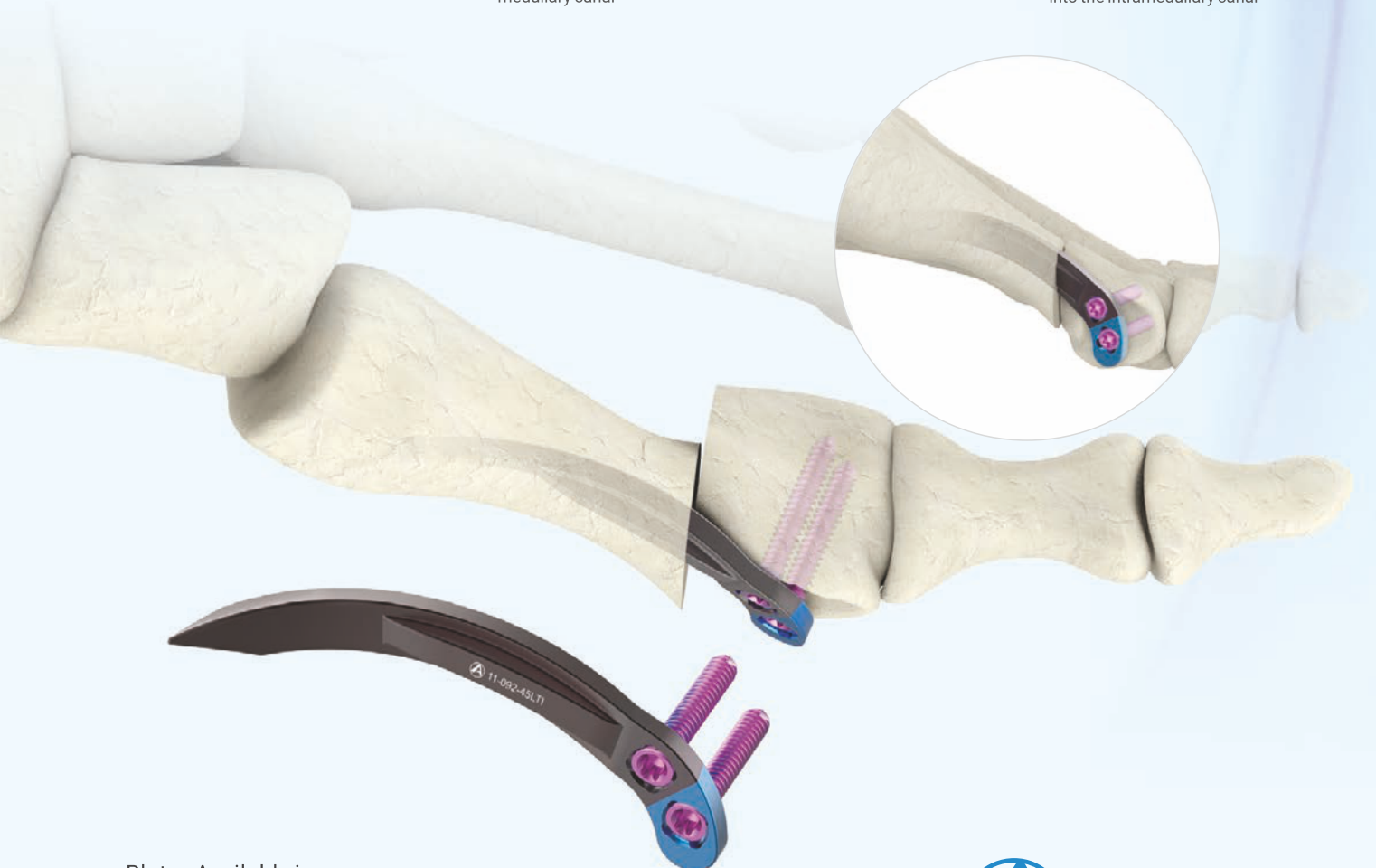
Plate shape allowing its stable fixation in the medullary canal



Plate profile that increases the stiffness of the implant

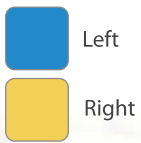


The edge of the plate facilitating plate insertion into the intramedullary canal



Plates Available in
Titanium as per ISO 5832-3

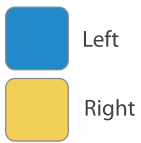


2.4mm AV-Wiselock Endosteal Plate, Standard


Length	Direction	Titanium
40mm	Left	11-091-40LTI
40mm	Right	11-091-40RTI
45mm	Left	11-091-45LTI
45mm	Right	11-091-45RTI
50mm	Left	11-091-50LTI
50mm	Right	11-091-50RTI

STERILE

Length	Direction	Titanium
40mm	Left	11-091-40LTI-S
40mm	Right	11-091-40RTI-S
45mm	Left	11-091-45LTI-S
45mm	Right	11-091-45RTI-S
50mm	Left	11-091-50LTI-S
50mm	Right	11-091-50RTI-S

2.4mm AV-Wiselock Endosteal Plate, Curved


Length	Direction	Titanium
40mm	Left	11-092-40LTI
40mm	Right	11-092-40RTI
45mm	Left	11-092-45LTI
45mm	Right	11-092-45RTI
50mm	Left	11-092-50LTI
50mm	Right	11-092-50RTI

STERILE

Length	Direction	Titanium
40mm	Left	11-092-40LTI-S
40mm	Right	11-092-40RTI-S
45mm	Left	11-092-45LTI-S
45mm	Right	11-092-45RTI-S
50mm	Left	11-092-50LTI-S
50mm	Right	11-092-50RTI-S

2.4mm Variable Angle Screw, Self-Tapping, (Star Head)


Dia	Length	Titanium
Ø2.4	8mm	TI-549.008
Ø2.4	10mm	TI-549.010
Ø2.4	12mm	TI-549.012
Ø2.4	14mm	TI-549.014
Ø2.4	16mm	TI-549.016
Ø2.4	18mm	TI-549.018
Ø2.4	20mm	TI-549.020
Ø2.4	22mm	TI-549.022
Ø2.4	24mm	TI-549.024
Ø2.4	26mm	TI-549.026
Ø2.4	28mm	TI-549.028
Ø2.4	30mm	TI-549.030
Ø2.4	32mm	TI-549.032
Ø2.4	34mm	TI-549.034

STERILE

Dia	Length	Titanium
Ø2.4	8mm	TI-549.008-S
Ø2.4	10mm	TI-549.010-S
Ø2.4	12mm	TI-549.012-S
Ø2.4	14mm	TI-549.014-S
Ø2.4	16mm	TI-549.016-S
Ø2.4	18mm	TI-549.018-S
Ø2.4	20mm	TI-549.020-S
Ø2.4	22mm	TI-549.022-S
Ø2.4	24mm	TI-549.024-S
Ø2.4	26mm	TI-549.026-S
Ø2.4	28mm	TI-549.028-S
Ø2.4	30mm	TI-549.030-S
Ø2.4	32mm	TI-549.032-S
Ø2.4	34mm	TI-549.034-S



7-155-01 Threaded guide Sleeve, Ø1.8/2.4mm for Endosteal Plate



7-155-02 1.8 mm Variable Angle Locking Drill Guide, Conical



1312-04-1.8 Drill Bit with Quick Coupling End, Ø1.8mm x Length 140mm



1312-18 Star Screwdriver Shaft, T8



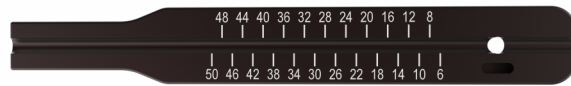
1312-30-2.4 Screw Holding Sleeve for 2.4mm Wise-Lock Screw



1312-17 Depth Gauge with Protector measuring upto 50mm



7-155-03 Length Measuring Device for Locking Screw



1312-21 Torque Limiting Attachment, 0.8Nm



7-019-03 Handle for Torque Limiting Attachment



7-155-04 Hohmann Retractor, 6mm



7-155-05 Hohmann Retractor, 8.5mm



7-155-06 Mallet for Endosteal Plate



7-155-07 Extractor Rode for Endosteal PLate



7-155-08 Raspatory for Endosteal Plate



7-155-09 Targeter for Endosteal Plate, Left



7-155-10 Targeter for Endosteal Plate, Right

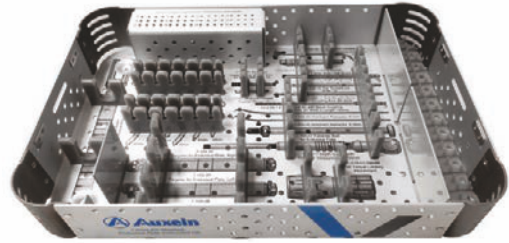


7-155-11 Drill Bit with Quick Coupling End, Ø4.0mm



7-155-16

Container for Endosteal Plate Instrument Set



7-155-17

Lid for Endosteal plate Instrument Set



7-155 Instruments Set for AV- WiseLock Endosteal Plate

Code	Set Consisting of	Units
7-155-01	Threaded guide Sleeve, Ø1.8/2.4mm for Endosteal Plate	2
7-155-02	1.8mm Variable Angle Locking Drill Guide, Conical	1
1312-04-1.8	Drill Bit with Quick Coupling End, Ø1.8mm x Length 140mm	1
1312-18	Star Screwdriver Shaft, T8	1
1312-30-2.4	Screw Holding Sleeve for 2.4mm Wise-Lock Screw	1
1312-17	Depth Gauge with Protector measuring upto 50mm	1
7-155-03	Length Measuring Device for Locking Screw	1
1312-21	Torque Limiting Attachment, 0.8Nm	1
7-019-03	Handle for Torque Limiting Attachment	1
7-155-04	Hohmann Retractor, 6 mm	1
7-155-05	Hohmann Retractor, 8.5mm	1
7-155-06	Mallet for Endosteal PLate	1
7-155-07	Extractor Rod for Endosteal Plate	1
7-155-08	Raspatory for Endosteal Plate	1
7-155-09	Targeter for Endosteal Plate, Left	1
7-155-10	Targeter for Endosteal Plate, Right	1
7-155-11	Drill Bit with Quick Coupling End, Ø4.0mm	1
7-155-16	Container for Endosteal Plate Instrument Set	1
7-155-17	Lid for Endosteal plate Instrument Set	1



AMPL-CTG-02-12C Rev No - 0030-11-2024

USA Auxein Inc. 1500 Nw 89th Court, Suite 107-108 Doral, Florida 33172 Tel: +1 305 395 6062 E Fax: +1 305 395 6262 Email: USoffice@auxein.com	MEXICO Auxein México, S.A. de C.V. Tepic 139 int 801, Colonia Roma Sur, Alcaldía Cuauhtémoc, CDMX, México, C.P. 06760 Tel: +521 55 7261 0318 Email: info@auxein.mx	INDIA Auxein Medical Pvt. Ltd. Plot No. 168-169-170, Phase-4, Kundli Industrial Area, HSIIDC, Sector-57, Sonapat - 131028, Haryana Tel: +91 99106 43638 Fax: +91 86077 70197 Email: info@auxein.com
--	---	--

www.auxein.com